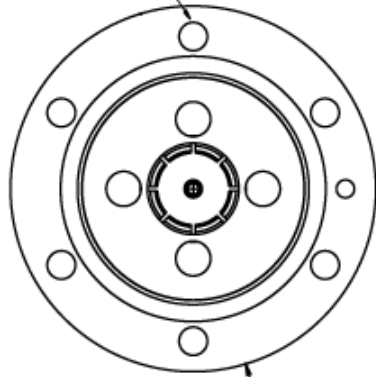
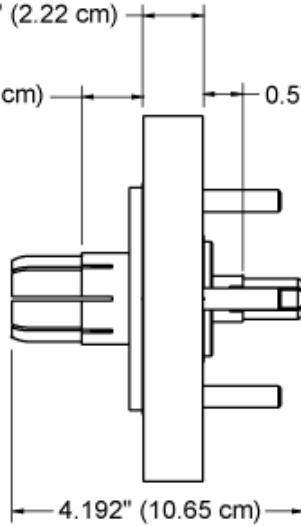


13/32" (0.406 cm) Thru
6 Holes on a
φ 4-3/8" B.C.

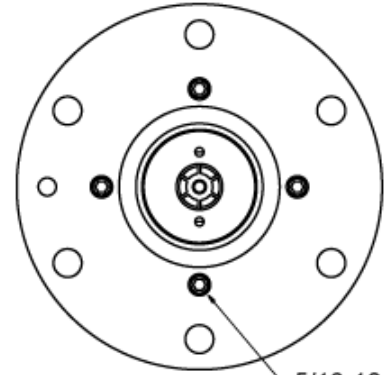


φ 5 1/4" (φ 13.34 cm)

7/8" (2.22 cm)
0.886" (2.25 cm) 0.573" (1.46 cm)



4.192" (10.65 cm)



5/16-18 Stud

Includes:

- 1 Set 3/8" Hardware, 3/8-16 X 2" Long Hex Bolts,
3/8-16 Hex Nuts, and Lock Washers
 - 1 Set 5/16" Hardware, 5/16-18 Nuts and Lock Washers
- Approx. weight: 5-3/4 lb (2.6 kg)
Approx. shipping weight: 6 lb (2.7 kg)

Adapter/Reducer
EIA 3 1/8" to 1 5/8"
Part No. 318F-62